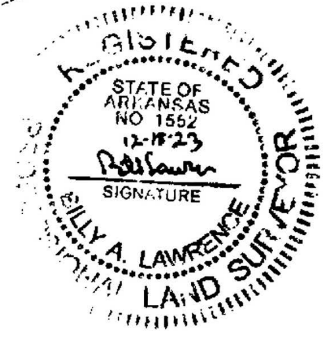
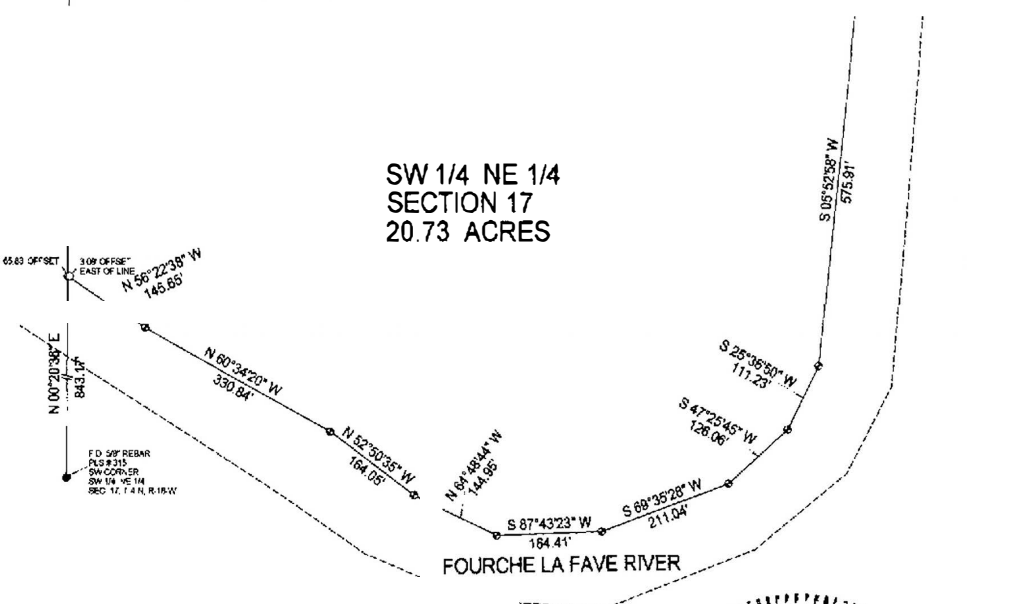


A part of the West Half of the NE 1/4 of Section 17, T-4-N, R-16-W, in Perry County, Arkansas, and being more particularly described as Beginning at the NE corner of the NW 1/4 of the NE 1/4; thence S 00°17'25" W, along the East line of the NW 1/4 of the NE 1/4, a distance of 1223.99 feet to the High Water Mark of the Fourche La Fave River; thence along the High Water Mark the following courses; S 55°41'33" W, a distance of 51.63 feet; thence S 28°54'59" W, a distance of 148.60 feet; thence S 05°52'58" W, a distance of 575.91 feet; thence S 25°36'50" W, a distance of 111.23 feet; thence S 47°25'45" W, a distance of 126.06 feet; thence S 69°35'28" W, a distance of 211.04 feet; thence S 87°43'23" W, a distance of 164.41 feet; thence N 64°48'44" W, a distance of 144.95 feet; thence N 52°50'35" W, a distance of 164.05 feet; thence N 60°34'20" W, a distance of 330.84 feet; thence N 56°22'38" W, a distance of 145.65 feet to the West line of the SW 1/4 of the NE 1/4; thence N 00°20'36" E, a distance of 1813.35 feet to the NW corner of the NW 1/4 of the NE 1/4; thence N 89°48'40" E, a distance of 1343.21 feet to the POINT OF BEGINNING; said described tract containing 61.59 Acres, more or less.

NW 1/4 NE 1/4
SECTION 17
40.86 ACRES

A 40 foot easement being 20.00 feet on each side of the following described centerline in a part of the East Half of the NE 1/4 of Section 17, a part of the East Half of the SE 1/4 of Section 7, a part of the South Half of the SW 1/4 and a part of the SW 1/4 of the SE 1/4 of Section 8, all in T-4-N, R-16-W, in Perry County, Arkansas, and being more particularly described as Commencing at the NE corner of the NW 1/4 of the NE 1/4 of Section 17; thence S 00°17'25" W, a distance of 15.00 feet to the POINT OF BEGINNING; thence N 89°48'40" E, a distance of 15.00 feet; thence N 00°14'14" E, a distance of 699.38 feet; thence N 42°50'05" W, a distance of 67.65 feet; thence N 66°54'35" W, a distance of 219.56 feet; thence N 58°22'55" W, a distance of 130.37 feet; thence N 77°29'33" W, a distance of 139.82 feet; thence N 42°19'00" W, a distance of 145.73 feet; thence N 44°35'12" W, a distance of 357.80 feet; thence N 86°39'18" W, a distance of 240.03 feet; thence S 89°50'50" W, a distance of 271.32 feet; thence S 68°13'57" W, a distance of 95.65 feet; thence N 88°59'41" W, a distance of 105.11 feet; thence N 75°40'55" W, a distance of 181.03 feet; thence S 84°50'35" W, a distance of 166.22 feet; thence S 89°43'05" W, a distance of 82.78 feet; thence N 85°29'17" W, a distance of 211.16 feet; thence S 87°28'42" W, a distance of 523.89 feet; thence S 87°44'48" W, a distance of 238.72 feet; thence N 85°34'15" W, a distance of 82.01 feet; thence S 83°11'09" W, a distance of 152.86 feet; thence S 88°51'13" W, a distance of 224.54 feet; thence S 79°13'31" W, a distance of 150.09 feet; thence N 74°29'26" W, a distance of 174.50 feet; thence N 86°54'23" W, a distance of 179.94 feet; thence N 79°05'56" W, a distance of 114.59 feet; thence N 87°44'02" W, a distance of 222.16 feet; thence N 52°04'56" W, a distance of 38.26 feet; thence N 30°09'05" W, a distance of 35.63 feet; thence N 01°57'19" E, a distance of 44.33 feet to the South right-of-way of Highway 216 and the Point of Ending.

SW 1/4 NE 1/4
SECTION 17
20.73 ACRES



SURVEYOR'S CERTIFICATION

This survey and plat are made for the exclusive use of the person or persons shown hereon, also those who purchase, mortgage or guarantee title thereto within a period of six months from the date shown hereon.

This survey does not constitute a title search by the surveyor. Survey is made subject to any facts that a current and accurate title search might reveal.

Unless specifically shown hereon no statement or guarantee is made concerning the presence of pipelines, wells, cables, tanks, or other subsurface structures that might affect the title or use of surveyed property.

- LEGEND**
- POB Point of Beginning
 - 1/2" Rebar Set
 - Fence Line
 - Found Rebar
 - Fence Corner
 - F.D 5X5 Stone
 - ▲ Found T-post
 - Computed Point
 - Set Cotton Spindle

300 150 0 300
BEARINGS BASED ON SURVEY BY PLS # 1062.

STATE PLAT CODE: 500-04N-16W-0-17-100-53-1552
DATE: DECEMBER 18, 2023 JOB: # 468-23A